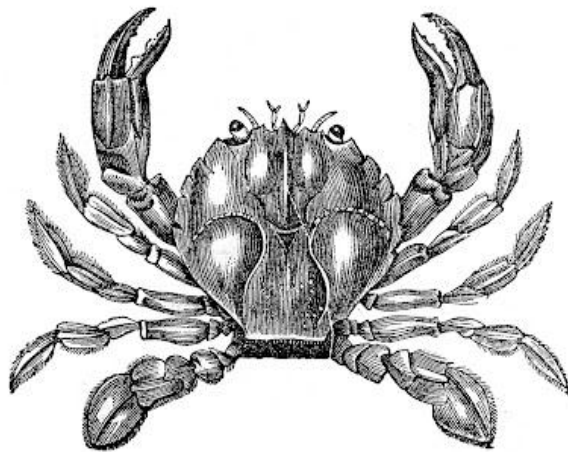


Children's School of Science Class History

Researched and Compiled
By
Jeremy Korr

Special thanks to
Jennifer S. Gaines, Curator
Woods Hole Historical Collection



Please Note:

1. Records for 1913, 1914, 1917, 1931, and 1932 were unavailable and not included here.
2. The 1916 session was suspended for the summer on July 10, 1916, due to regional outbreak of infantile paralysis.
3. Some classes appear under more than one subject heading. Subject

headings are listed in alphabetical order.

4. Any omissions are unintended. Please send any additions to centennial@childrensschoolofscience.org .

Biology / Microbiology

Plant Biology 1920, 1923, 1924, 1926, 1927, 1928, 1929, 1930. 1992 (Biology of Plants)

Animal Biology 1921, 1922, 1925

General Biology 1933, 1948, 1949, 1950, 1951, 1955, 1960, 1961, 1962, 1963

Advanced Biology 1933, 1946, 1947

Biological Methods 1934, 1935, 1936, 1937, 1938, 1939, 1940, 1941, 1942

Elementary Biology 1935, 1936, 1937, 1938, 1939, 1940, 1941, 1942, 1943, 1944, 1945, 1946, 1947

Water Life 1936, 1937, 1938, 1939, 1940, 1941, 1942, 1943, 1944, 1945 [continued by Marine Biology]

Marine Biology [continues Water Life] 1946, 1947, 1948, 1949, 1950, 1951, 1952, 1955, 1956, 1957, 1958, 1959, 1960, 1961, 1962, 1963, 1964, 1965, 1966, 1967, 1968, 1969, 1970, 1971, 1973, 1974, 1975, 1976, 1977, 1978, 1979, 1980, 1981, 1982, 1983, 1984, 1985, 1986, 1987, 1988, 1989, 1990, 1991, 1992, 1993, 1996, 1997, 1998, 1999, 2000, 2001, 2002, 2003, 2004, 2005, 2006, 2007, 2008, 2009, 2010, 2011, 2012

Advanced Marine Biology 1976, 1977, 1978, 1979, 1980, 1982, 1984, 1985, 1986, 1988, 1989, 1990, 1994, 1996, 1998, 2000, 2001, 2003, 2004 [Vertebrates], 2007, 2008, 2009, 2010, 2011, 2012

Aquatic Biology 1983

Aquatic Life 2007, 2008, 2009, 2010, 2011, 2012

Fresh Water Biology 1946, 1947

Biology of Life Functions 1955, 1958, 1959, 1960, 1962, 1969

Molecular Biology 1961, 1965, 1999

Biological Adaptations and Behavior 1964

Biological Oceanography 1964, 1973

Fresh Water and Field Biology 1965

Developmental Biology 1966, 1967, 1971

Environmental Biology 1967

Biology of Cape Cod Plants 1968, 1970
Biology 1971

Introductory Microbiology 1966, 1967

Microbiology 1971, 1996, 1997, 1998, 2000

Microbial Life 2008, 2009, 2010, 2011, 2012

Microbial Diversity 2010



Advanced Microbiology 1997, 2005
Experimental Biology Workshop 1974
Biology of the Salt Marsh 1973
Vertebrate Biology 1979, 1980
Pond and Stream Biology 1986
Introduction to Neuro-Marine Biology 1988
Sensory Biology 1989
Sensory Systems 2011
Biological Clocks and Calendars 1972
The Cell 1976
Cells to Organisms 1982
The Cell and Developmental Biology 1978
Cell Structure and Function 1965
Life Under the Microscope 1993, 1994, 1998, 1999, 2001
Reproduction and Development 2002, 2003
Advanced Marine Vertebrates 2002

Birds

Birds 1915, 1918, [continued by **Birds and Nests**, **Bird Study and Mineralogy**, **Bird Study and Forestry**], 1953, 1954, 1955
[continued by **Ornithology**]
Birds and Nests [continues **Birds**] 1920, 1923, 1924, 1926, 1928, 1930 [continued by **Bird Study and Mineralogy**]
Bird Study and Mineralogy 1945
Bird Study, Forestry, & Map Reading 1946
Bird Life 1948, 1949, 1950, 1951, 1952
Ornithology [continues **Bird Life**] 1956, 1957, 1958, 1959, 1960, 1961, 1962, 1963, 1964 (Beginning), 1965, 1967, 1968, 1969, 1970, 1971, 1972, 1973, 1975, 1982, 1983, 1984, 1987, 1988, 1989 (**Ornithology and Bird Biology**), 1990, 1992, [continued by **Marine Ornithology** in 1994] 1995, 1996, 1998, 2001, 2003 (**Ornithology and the Physics of Flight**), 2005, 2007, 2009
Marine Ornithology 1994
Advanced Birds 1952, 1955
Advanced Ornithology 1964



Earth Sciences

Introduction to Earth Sciences 1953, 1954, 1956, 1957, 1966

Earth Science 1965, 1967, 1968, 1971

Ecology

Plant Ecology 1915

Ecology 1939, 1940, 1941, 1942, 1943, 1950, 1951, 1953 (Introduction to Ecology), 1954 (Introduction to Ecology), 1969, 1970, 1972, 1973

Advanced Ecology 2001

Advanced Marine Ecology 2006

Seashore Ecology 1955, 1956, 1957, 1958, 1959, 1960, 1961, 1962, 1963

General Ecology 1956, 1959, 1961

Ecology of Inland Waters 1957

Principles of Ecology 1962

Applied Ecology 1972, 1973, 1980

Invertebrate Ecology 1975, 1976

Marine Ecology 1976, 1978, 1996, 2000, 2002, 2004

Field Ecology 1977, 1988 (Field Studies in Ecology)

Ecology and the Oceans 1979

Insect Ecology 1983

Coastal Ecology 1992, 1993

Experimental Ecology 1994, 1997

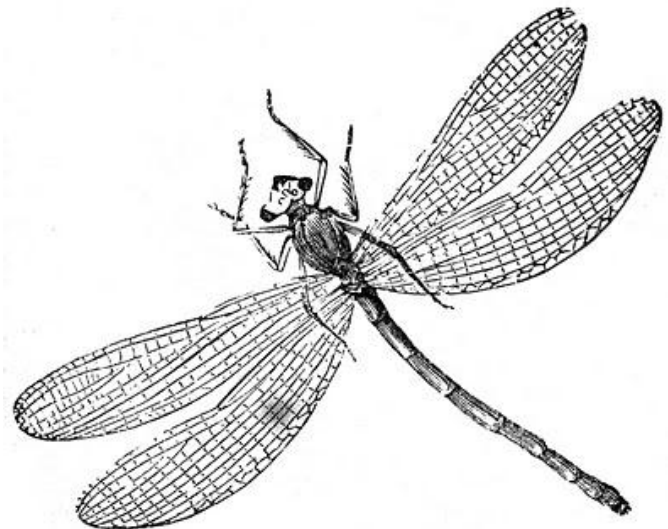
Estuary Ecology 1995, 1996, 2000
(Estuarine Ecology)

Fishing Ecology 1996, 1997

Marine and Estuary Ecology 1997

Terrestrial Ecology 2002, 2011, 2012

Ecology of the Bike Path 2010, 2011, 2012



Electronics

Oceanographic Electronics 1972, 1973

Experimental Electronics 1985, 1987

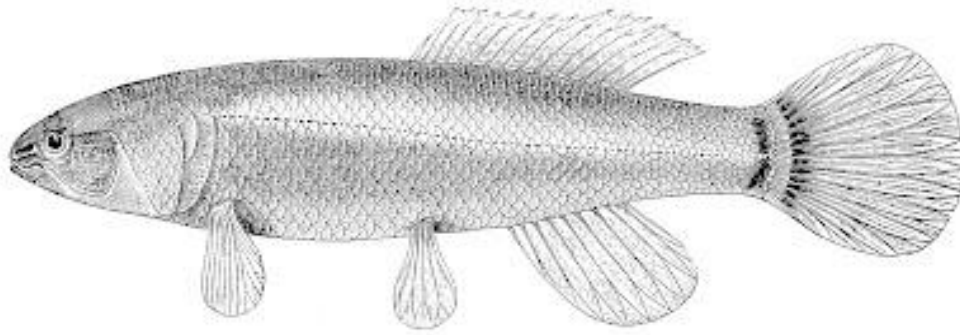
Electronics 1988
Electronics and Engineering 2008
Marine Electronics and Engineering 2004, 2005, 2006
Advanced Electronics 2006
Advanced Electronics and Engineering 2008
Ocean Engineering 2007
Robotics/ROV 2009
Robotics 2010
ROV 2010
ROV/Robotics 2011, 2012

Embryology

Marine Embryology 1964, 1965, 1973, 1975, 1987
Embryology 1970, 1985, 2003, 2004, 2005, 2006, 2007, 2008, 2009, 2010, 2011, 2012

Environmental Study (General)

Water 1980, 1997
Man and the Environment 1983
Sun and Rain 1986, 1987
The Blue Planet 1988
The Living Planet 1991
Weather and Climate 1992
Meteorology 1994, 1995, 1996, 1997, 1998, 1999, 2001, 2002, 2003, 2004, 2005, 2006, 2007
Meteorology and Climatology 2008, 2009
Sun and Life 1994
Solar Energy 1989
Global Sustainability 2008, 2009



Fishes

Marine Ichthyology 1962 [continued by Ichthyology]

Ichthyology 1964, 1966, 1967, 1968, 1969 [continued by Fishes & Fishing], 1993, 1994, 1995, 1996, 1997, 1998, 1999, 2000, 2001, 2002, 2003, 2004, 2005, 2006, 2007, 2008, 2009, 2010, 2011, 2012

Fishes and Fishing [continues Ichthyology] 1981, 1982, 1983, 1984, 1985, 1986, 1987 [splits into two separate classes, FISHES and FISHING, in 1990], 1997

Fishes [continues Fishes and Fishing] 1990, 1991, 1992 [continued by Ichthyology]

Fishing [continues Fishes and Fishing] 1990, 1991, 1992, 1993, 1994, 1995, 1996 [continues as Fishes and Fishing], 1999

Fishing Ecology 1996

Geology / Mineralogy

Bird Study and Mineralogy 1945

Geology of Cape Cod 1962, 1963, 1964, 1965, 1966, 2000, 2005, 2006, 2007

Cape Geology 1969

Geology 1968, 1972, 1973, 1975, 1984, 1985, 1986, 1987, 1989, 1997, 1998, 2008, 2009, 2010, 2011, 2012

Advanced Geology 2001

Geological Oceanography 1982

Marine Geology and Coastlines 1992

Environmental Geology 2002

Humans

Populations and Environments 1966
Man and the Environment 1983
People and Pollution 1995
Marine Conservation 2000
Global Sustainability 2009



Illustration/ Art and Science

Biological Illustration 1975, 1976, 1977, 1980, 1981, 1982, 1983, 1984, 1985, 1986, 1988, 1989, 1990, 1991, 1992, 1993, 1994, 1995, 1996, 1997, 1998, 1999, 2000, 2002, 2003, 2004, 2005, 2006, 2007, 2008, 2009, 2010, 2011, 2012
Advanced Biological Illustration 1978, 1985, 1989
Sketching from Nature 1994, 1995
Drawing from Nature 1998, 1999, 2000, 2001, 2002
Science & Creativity 1997
Anatomical Drawing 2011, 2012

Insects

Insects 1915, 1916, 1919, 1920, [continued by *Insect Life* 1921-1922] 1923, 1924, 1925, 1926, 1927, 1928, 1929, 1930, 1933, 1934, 1935, 1936, 1937, 1938, 1939, 1940, 1940, 1941, 1942, 1945, [continued by *Insect Life* 1947-1951] 1952, 1953, 1954 [continued by *Entomology*]
Insect Life [continues *Insects*] 1921, 1922, [continued by *Insects*] 1947, 1948, 1949, 1950, 1951 [continued by *Insects*]
Entomology [continues *Insects*] 1956, 1957, 1958, 1959, 1960, 1961, 1962, 1963, 1964, 1965, 1966, 1967, 1968, 1969, 1970, 1971, 1972, 1973, 1974, 1976, 1977, 1978, 1979, 1980, 1981, 1982, 1983, 1984, 1985, 1986, 1987, 1988, 1990, 1991, 1992, 1994, 1995 (Beginning), 1996 (Beginning), 1997, 1998, 1999, 2001, 2002, 2003, 2004, 2006,



2008, 2010, 2012

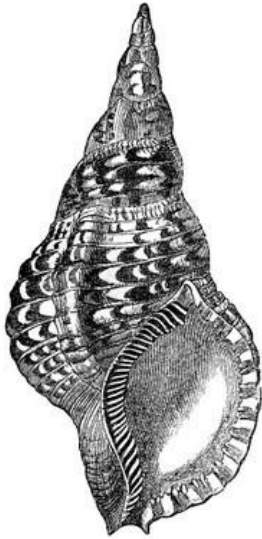
Advanced Entomology 1989, 1993, 1995, 1996

Insect Problems 1916

Insect Ecology 1983

Pests and Parasites 1986

Seminar in Pollination 2002, 2003



Introductory Seashore Orientation

Sea Shore Life / Seashore Life 1915, 1916, 1934, 1935, 1946
(Introduction to Seashore Life), 1948, 1949, 1950, 1951, 1952, 1953,
1954, 1955, 1956, 1957, 1958, 1959, 1960, 1961, 1962, 1963, 1964,
1965, 1966 (Survey of Seashore Life), 1967, 1968, 1969, 1970, 1971,
1972, 1973, 1974, 1975, 1976, 1977, 1978, 1979, 1980, 1981, 1982,
1983, 1984, 1985, 1986, 1987, 1988, 1989, 1990, 1991, 1992, 1993,
1995, 1996, 1997, 1998, 1999, 2000, 2001, 2002, 2003, 2004, 2005,
2006, 2007, 2008, 2009, 2010, 2011, 2012

Seashore Exploration 1989, 1990, 1991, 1992, 1993, 1994

Investigation / Labwork

Individual Lab Work 1918

Introduction to Research 1943

Investigations and Discoveries 1981, 1984

Research Problems 1987

Observation and Imagination 1991

What is Woods Hole? 1993

Laboratory Journalism 1996

Writing Science 1997

Science Eyes 1996

Marine Research 1999

Advanced Marine Research 2005

Experiments in Woods Hole 2007, 2008, 2010, 2011, 2012

Nature Study / Field Natural History

Nature Study 1916, 1919, 1920, 1921, 1922, 1923, 1924, 1925, 1926, 1927, 1928, 1929, 1930, 1933, 1934, 1936 (Introduction to Nature Study, 1936-1939), 1937, 1938, 1939, 1940, 1941, 1942, 1943 (Introduction to Nature Study, 1943-1945), 1944, 1945, 1946, 1948, 1949 [continued by Natural History, Field Natural History, and Woods Ponds and Fields]

Natural History [continues Nature Study] 1950, 1951 [continued by Field Natural History], 1966 (Introduction to Natural History), 1967

Field Natural History [continues Natural History] 1952, 1953, 1954, 1955, 1956, 1957, 1958, 1959, 1960, 1961, 1962, 1963, 1964, 1965, 1968, 1969, 1970, 1971, 1972, 1973, 1974 [continued by Woods Ponds and Fields]

Woods, Ponds, and Fields [continues Field Natural History] 1975, 1976, 1977, 1978, 1979, 1982 (Woods Fields and Ponds), 1984, 1985, 1989, 1990, 1991, 1993, 1995, 1996, 1997, 1998, 1999, 2000, 2001, 2002, 2003, 2004, 2005, 2006, 2007, 2008, 2009, 2010, 2011, 2012

The Forest 1921, 1922, 1925, 1927, 1929

Forest Life 1933

Advanced Nature Study 1939

Forestry and Conservation 1951

Habits and Habitats 1972, 1975, 1976, 1977, 1978, 1979, 1981, 1983, 1988, 1990, 1996, 1997

Limnology 1966, 1968, 1971, 1974, 1980 [continued by Pond Life]

Pond Life [continues Limnology] 1981

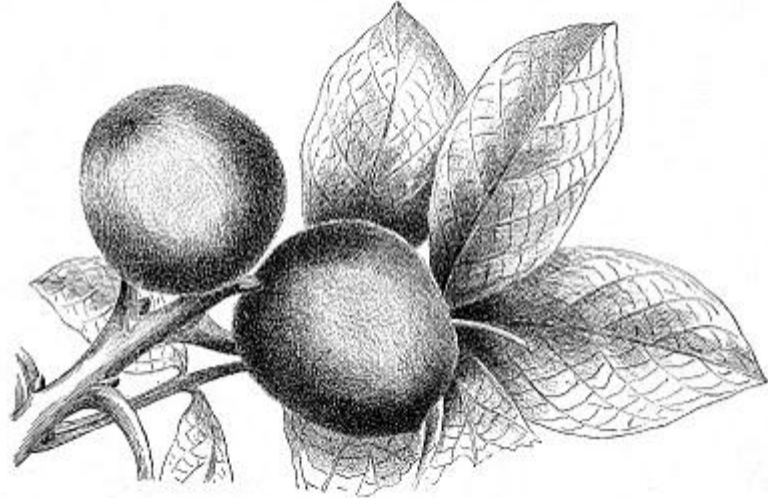
Swamps, Bogs, and Marshes 1974

Cape Cod Natural History 1975

Sea Shore, Sea Floor, and Salt Marsh 1978, 1979, 1985, 1989

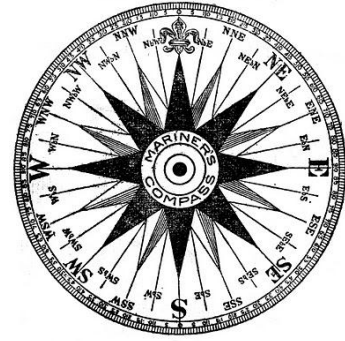
Advanced Field Studies 1981

Wetlands 1991



Navigation / Orienteering / Maps

Navigation and Orienteering 1979
Navigation 1990
Terrestrial Navigation 2008, 2009, 2010
Mapmaking and Orienteering 1986
Orienteering 1987
Mapping Woods Hole 1987
Mapping 1995



Neurobiology

Behavior and the Brain 1988
Introduction to Neuro-Marine Biology 1988
Neurobiology 1991

Oceanography

Oceanography 1959, 1963, 1969, 1971, 1974, 1976, 1977, 1988, 1989, 1991, 1992, 1993, 1996, 1998, 2001, 2002, 2003, 2004, 2005, 2006, 2007, 2008, 2009, 2010, 2011, 2012
Biological Oceanography 1964, 1973
Experimental Oceanography 1965, 1967
Oceanographic Electronics 1972, 1973
Geological Oceanography 1982
Waves, Currents, and Tides 1999

Photography & Film

Nature Photography / Beginning Nature Photography / Beginning Photography 1963, 1967, 1970, 1971, 1972, 1973, 1974, 1975, 1976, 1977, 1978, 1979, 1980, 1981, 1982, 1983, 1984, 1985, 1986, 1987, 1988, 1989, 1990, 1991, 1992, 1993, 1994, 1995, 1996, 1997, 1998, 1999, 2000, 2001, 2002, 2003, 2004, 2005, 2006, 2007
Intermediate Photography 1996, 1997, 1998, 1999, 2000, 2001
Advanced Photography 1974, 1975, 1978, 1979, 1981, 1982, 1984, 1991, 1992, 1993, 1994, 1995, 1996, 1997, 1998, 1999, 2000, 2001, 2002, 2003, 2004, 2005, 2006, 2007, 2008, 2009
Photography Workshop 2004
Advanced Photo Workshop 2005, 2006, 2007

Nature and Film 2008, 2009
Advanced Topics in Film 2009
Black and White Photography 2010, 2011, 2012

Physiology

General Physiology 1961, 1971
Physiology of Microorganisms 1964
Anatomy and Physiology 1977
Environmental Physiology 1983

Plants

Plant Ecology 1915
Plant Life 1915, 1916
Plant Physiology 1915, 1916, 1918, 1919
Trees and Plants 1918, 1919
Cryptogamic Botany 1918, 1954
Plant Life of Woods Hole 1920, 1923, 1924, 1926, 1928, 1930
Nature and Development of Plants 1920, 1922, 1925, 1926, 1927
Plant Biology 1920, 1923, 1924, 1926, 1927, 1928, 1929, 1930, 1992 (Biology of Plants)
Plants and Their Surroundings 1921
Forest Life 1933
Animals and Plants of Woods Hole 1937, 1938
Plants and Animal Relationships 1944, 1945
Evolution of the Plant Kingdom 1944, 1945
Plant and Animal Life 1947
Botany 1952, 1953, 1957, 1958, 1995, 1996 (Beginning), 1997 (Basic), 2000 (Seaweeds, Marshmallows, and Pines), 2001
Botany of Sea and Shore 1998, 1999
World of Plants 1958, 1981, 1983
The Plants Around Us 1960, 1961, 1980
Our Flowering Plants 1963
Plants of Cape Cod 1966
Biology of Cape Cod Plants 1968, 1970



Marine Botany 1970, 1971, 1992, 1993, 1994
Seaweeds 1986
Sea Floor Flora 1990
Roots 'n' Shoots 1990
Field Botany 1996, 1997
Advanced Botany 1999
Seminar in Pollination 2002
Coastal Botany 2003, 2004, 2005, 2006, 2007, 2008, 2009, 2010, 2011, 2012

Zoology / General Animal Courses

Animal Physiology 1916, 1919
Animal Life and Habits 1918
Animal Processes 1918
Animal Development 1918
Animals of Woods Hole 1919, 1920, 1921, 1922, 1923, 1924, 1925, 1926, 1927, 1928, 1929, 1930, 1933, 1934, 1935, 1936
Animals and Plants of Woods Hole 1937, 1938
Marine Animal Behavior 1967
Animal Behavior 1969, 1970, 1973, 1975, 1977, 1980, 1984, 1990, 1991, 2002, 2003, 2004, 2005, 2006, 2007, 2008, 2009, 2010, 2011, 2012
Anatomy and Physiology 1977
Field Zoology 1981, 1982



Zoology / Vertebrates and Invertebrates

Invertebrates 1948, 1949, 1950, 2012
Invertebrate Zoology 1954, 1959, 1961, 1963, 1965, 1967, 1968, 1971, 1972, 1973, 1978, 1979, 1984, 1988, 1990, 1991, 1992, 1994, 1995
Invertebrate Ecology 1975, 1976
Marine Invertebrates 1981, 1982, 1983, 2000
Vertebrate Zoology 1952, 1956, 1957, 1958, 1960, 1961, 1964, 1966, 1974, 1989, 1992
Natural History of Vertebrates 1962

Vertebrate Anatomy 1968, 1970
Vertebrate Physiology 1969
Morphology of Vertebrates 1970
Vertebrate Biology 1979, 1980
Vertebrate Adaptation 1991, 1993
Advanced Marine Vertebrates 2002
Advanced Marine Biology: Vertebrates 2003, 2004
Advanced Marine Biology: Invertebrates 2003

Zoology / Specialized Courses

Mammals 1953
Marine Mammals 2010, 2011, 2012
Introduction to Mammalogy 1955
Herpetology 1970, 1980, 1996, 2010, 2011, 2012
Echinoderms 1988
Fishes (see separate category)
Birds (see separate category)



Miscellaneous

Physiography 1915
Science for Little Folks 1918
General Science 1918, 1919, 1920, 1921, 1922, 1923, 1924, 1925, 1926, 1927, 1928, 1929, 1930, 1947, 1948, 1949
Elementary Physical Science 1933, 1934, 1935
Nature Craft Club 1935
Intermediate Science 1943, 1944
Genetics 1967, 1968, 1969, 1972, 1974
Introduction to Biophysics 1969
Parasitology 1991, 1993, 1995, 2003, 2004, 2010, 2011, 2012
Pests and Parasites 1986
Comparative Locomotion 1994, 1995
Mariculture 1995

Nautical Science 1995, 1996, 1997, 1998, 1999, 2000, 2001, 2002, 2003, 2004, 2005, 2006, 2007, 2008, 2009, 2010, 2011, 2012

Mycology 1997

Medical Microscopy 2004

Last update: 9 August 2012



All images reproduced are from websites within the public domain.

Layout and design by Kristie Proctor